



Portable Lawn Sprinkler and Multi-Use Pump

Please read and save these instructions. Read carefully before attempting to assemble, install, operate or maintain the product described. Protect yourself and others by observing all safety information. Failure to comply with instructions could result in personal injury and/or property damage! Retain instructions for future reference.

Operating Instructions and Parts Manual

PLS100

SPECIFICATIONS

POWER SUPPLY REQUIREMENT	120 V, 60 Hz
MOTOR	Single Phase, Fan Cooled, Continuous Duty
HORSEPOWER	1 HP
CIRCUIT REQUIREMENT	15 A (minimum)
LIQUID TEMPERATURE RANGE	40° F- 120° F

CONSTRUCTION

MOTOR HOUSING	Coated Steel
MOTOR SHAFT	Stainless Steel
IMPELLER	Thermoplastic
VOLUTE	Stainless Steel
PUMP SUCTION	1 in. NPT
PUMP DISCHARGE	1 in. NPT

PERFORMANCE

Model	HP	Discharge Head	40 ft.	60 ft.	80 ft.	100 ft.
PLS100	1	Gal/hr	660	550	390	210



DESCRIPTION

This portable pump is designed to sprinkle lawns and small gardens from lakes, ponds, or rivers, empty or fill stock tanks, remove standing water from flooded areas, and transfer water.

Installation of this pump outdoors, unprotected from the weather, may cause hazardous conditions and will void warranty. If using outdoors, protect pump from direct weather elements such as sun, rain, sleet, snow, and extreme temperature changes. Water inside the pump may freeze, limiting its performance and damaging the pump, pipes, and hoses.

UNPACKING

Inspect this unit before it is used. Occasionally, products are damaged during shipment. If the pump or components are damaged, return the unit to the place of purchase for replacement, or call Customer Support (800-237-0987).

SAFETY SIGNAL WORDS

This manual contains information that is important to know and understand. This information is provided for SAFETY and to PREVENT EQUIPMENT PROBLEMS. To help recognize this information, observe the following symbols.

⚠ DANGER *Danger indicates an imminently hazardous situation which, if NOT avoided, WILL result in death or serious injury.*

⚠ DANGER *La mention Danger indique une situation dangereuse imminente qui, si elle n'est pas évitée, ENTRAÎNE la mort ou des blessures graves.*

⚠ WARNING *Warning indicates a potentially hazardous situation which, if NOT avoided, COULD result in death or serious injury.*

⚠ AVERTISSEMENT *La mention avertissement indique une situation potentiellement dangereuse qui, si elle n'est pas évitée, risque d'entraîner des lésions corporelles graves ou même la mort.*

⚠ CAUTION *Caution indicates a potentially hazardous situation which, if NOT avoided, MAY result in minor or moderate injury.*

⚠ MISE EN GARDE *La mention mise en garde indique une situation potentiellement dangereuse qui, si elle n'est pas évitée, pourrait entraîner des blessures mineures ou modérées.*

NOTICE *Notice indicates important information, that if NOT followed, MAY cause damage to equipment.*

⚠ *This is the safety alert symbol. It is used to alert you to potential bodily injury hazards. Obey all safety messages that follow this symbol to avoid possible harm.*

NOTE: Information that requires special attention.

GENERAL SAFETY INFORMATION

CALIFORNIA PROPOSITION 65

⚠ WARNING

This product can expose you to chemicals, including DEHP, which is known to the State of California to cause cancer, birth defects and reproductive harm. For more information, go to www.P65Warnings.ca.gov.

⚠ AVERTISSEMENT

Ce produit peut vous exposer à des produits chimiques, notamment du DOP, reconnus par l'État de Californie comme étant cancérigènes et à l'origine d'anomalies congénitales et de problèmes de l'appareil reproductif. Pour plus de renseignements, visiter le site www.P65Warnings.ca.gov.

General Safety

- Read the manual(s) included with this product carefully. Be thoroughly familiar with the controls and the proper use of the equipment. Follow all instructions. Failure to follow these instructions could cause serious bodily injury and/or property damage.



⚠ DANGER *This pump is non-submersible. Keep the motor dry at all time. Do not wash the motor. Do not immerse. Protect the motor from wet weather.*

⚠ DANGER *Cette pompe est non submersible. Garder toujours le moteur au sec. Ne pas laver le moteur. Ne pas l'immerger. Protéger le moteur contre les intempéries.*

⚠ DANGER *Do not allow any part of the cord or receptacle ends to sit in water or in damp locations.*

⚠ DANGER *Ne pas laisser les extrémités du cordon ou la prise de courant dans l'eau ou dans un endroit humide.*

REMINDER: Keep your dated proof of purchase for warranty purposes! Attach it to this manual or file it for safekeeping.

Operating Instructions and Parts Manual

GENERAL SAFETY INFORMATION (CONT'D)

⚠ WARNING *Pump only clear water. Do not pump flammable or explosive fluids such as gasoline, fuel oil, kerosene, etc. Do not use in a flammable and/or explosive atmosphere. Personal injury and/or property damage could result and will void warranty.*



⚠ AVERTISSEMENT *Pomper uniquement de l'eau fraîche. Ne pas pomper de liquide inflammable ou explosif tel que l'essence, le mazout, le kérosène, etc. Ne pas utiliser dans un environnement inflammable et/ou explosif. Des blessures corporelles ou des dégâts matériels pourraient en résulter et annuleront la garantie.*

NOTICE *This pump is not designed to handle salt water, brine, laundry discharge or any other application which may contain caustic chemicals and/or foreign materials. Pump damages could occur if used in these applications and will void warranty.*

⚠ WARNING *All wiring must be performed by a qualified electrician. The pump must be installed in compliance with all local and national codes.*



⚠ AVERTISSEMENT *L'ensemble du câblage doit être effectué par un électricien qualifié. La pompe doit être installée en conformité avec toutes les lois locales et le Code national de l'électricité.*

1. Connect this product to a grounded circuit equipped with a ground fault circuit interruptor (GFCI) device.
2. Before installing this product, have the electrical circuit checked by an electrician to ensure proper grounding.
3. BE CERTAIN the pump power source is disconnected before installing or servicing pump.
4. Be sure the water source and piping are clear of sand, dirt and scale. Debris will clog pump and void warranty.
5. Failure to protect pump and piping from freezing could cause severe damage and will void the warranty.
6. Do not run pump dry.

INSTALLATION

PUMPING FROM LAKES, PONDS OR SMALL STREAMS

NOTE: This pump is not intended for a permanent application.

1. Locate pump as close as possible to the water source, keeping the vertical distance from the water to pump as small as possible, not to exceed 20 ft. Place pump on level support. Protect against flooding and excessive moisture.
2. Long lengths of pipe or hose and use of many fittings will reduce pump flow. Use the smallest number of fittings and shortest possible length of pipe or hose.
3. Be sure water is clear of debris such as sand, mud, and gravel.
4. Connect inlet pipe or hose to pump. The inlet connection is designed for 1" NPT thread. Rigid pipe such as PVC will work fine for inlet and outlet pipe. (Reminder: Minimize length of pipe and number of fittings.) An adapter for garden hose is included (see Figure 1).

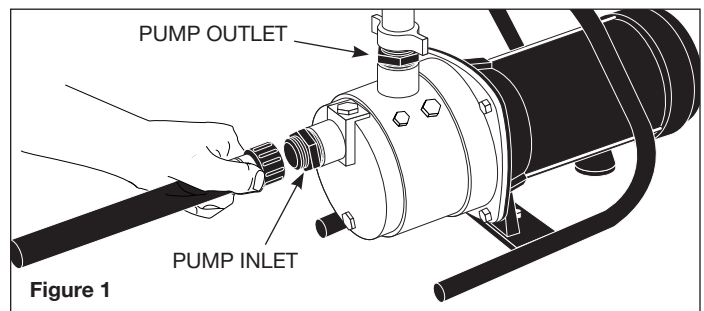


Figure 1

NOTICE *The inlet hose must be a reinforced type when pumping from lakes, ponds, or small streams. Regular garden hose will collapse and lead to pump failure.*

5. A foot valve with strainer should be used to maintain prime during operation, to protect swimmers, wildlife, and debris.
6. Seal all connections in the inlet hose. An air leak in the fittings, hose, pipe or connections will draw air even though no water leaks out. These inlet leaks will reduce pump performance and lead to pump failure.
7. Connect outlet pipe or hose to pump. The outlet connection is designed for 1" NPT thread. Rigid pipe such as PVC or garden hose may be used. An adapter to garden hose thread is included (Figure 1).

OPERATION

▲ CAUTION *Never run the pump dry. Running pump without water will cause seal failure.*

▲ MISE EN GARDE *Ne jamais faire fonctionner la pompe à sec. Le fait de faire fonctionner la pompe sans eau cause une défaillance du joint.*

1. Remove priming port on pump, fill the pump and suction hose with water. Reinstall priming port on pump (see Figure 2).

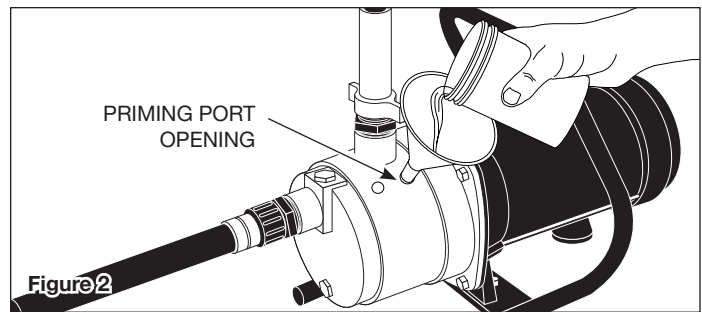
▲ WARNING *Risk of electrical shock! This pump is supplied with a grounding conductor and grounding type attachment plug. Use a grounded receptacle to reduce the risk of fatal electric shock.*

▲ AVERTISSEMENT *Risque de choc électrique! Cette pompe est fournie avec un conducteur de mise à la terre et une fiche de terre. Utiliser une prise de courant mise à la terre pour réduire le risque de choc électrique mortel.*

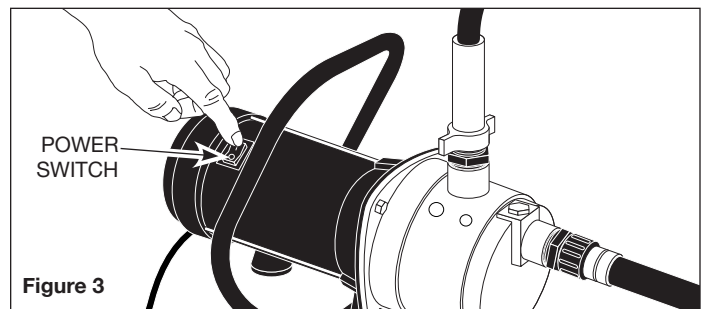
▲ WARNING *Never cut off the round grounding prong on the power cord. Cutting the cord or plug will make the pump unsafe to operate and void the warranty. Do not use the pump with a damaged cord.*

▲ AVERTISSEMENT *Ne jamais couper la broche de terre ronde sur le cordon. Couper le cordon ou la prise rendra l'utilisation de la pompe dangereuse et annulera la garantie. Ne pas utiliser la pompe avec un cordon endommagé.*

2. Turn the pump switch to the 'Off' position.
3. This pump is only for use on 120 volt (single phase), 60 Hz, 15 amp service and is equipped with a 3-conductor cord and 3-prong, grounding type plug. Insert power cord directly into GFCI outlet.



4. Turn pump switch to the 'On' position (see Figure 3). If the pump does not pump water within 10 minutes, turn off pump and refill with clean water. If the pump does not operate after repeated attempts, check the following:
 - Vertical distance of pump to water level must not be over 20 feet.
 - Suction line must be airtight.
 - All valves in suction and discharge line must be open.



TROUBLESHOOTING CHART

Symptom	Possible Cause(s)	Corrective Action
Motor will not run	1. Disconnect switch is off	1. Be sure switch is on
Motor runs hot and overload kicks off	1. Voltage is too low 2. Pump house not properly vented	1. Check with power company. Use heavier gauge cord 2. Be sure pump has sufficient ventilation to cool the motor
Motor runs but no water is delivered NOTE: Check to make sure pump is properly primed before looking for other causes. Unscrew priming plug and see if water is in priming hole.	1. Pump in new installation did not pick up prime through: a. Improper priming b. Air leaks c. Leaking foot valve 2. Pump has lost prime through: a. air leaks b. water level below suction of pump 3. Impeller is plugged 4. Check valve or foot valve is stuck in closed position 5. Foot valve and/or strainer are buried in sand or mud	1. New installation: a. Re-prime according to instructions b. Check all connections on suction line c. Replace foot valve 2. Existing installations: a. Check all connections on suction line and shaft seal b. Lower suction line into water and re-prime. If receding water level in well exceeds suction lift, a deep well pump is needed 3. Clean impeller 4. Replace check valve or foot valve 5. Raise foot valve and/or stainer above well bottom
Pump does not deliver water to full capacity	1. Water level in well is lower than estimated 2. Steel piping (if used) is corroded or limed, causing excess friction 3. Piping is too small in size	1. A deep well jet pump is needed if over 20 ft. of water 2. Replace with plastic pipe where possible, otherwise with new steel pipe 3. Use larger piping

LIMITED WARRANTY

For one year for PLS100 model from the date of purchase, from an authorized dealer, Wayne Water Systems will repair or replace, at its option for the original purchaser, any part or parts of its Lawn Pumps or Water Pumps ("Product") found upon examination by Wayne Water Systems to be defective in materials or workmanship. Please call Wayne Water Systems (800-237-0987) for warranty instructions. Be prepared to provide the model number and the serial number when exercising this warranty. All transportation charges on Products or parts submitted for repair or replacement must be paid by purchaser.

This Limited Warranty does not cover Products which have been damaged as a result of accident, abuse, misuse, neglect, improper installation, improper maintenance, or failure to operate in accordance with Wayne Water Systems' written instructions.

THIS WARRANTY IS IN LIEU OF ANY AND ALL OTHER WARRANTIES, OBLIGATIONS OR AGREEMENTS, EXPRESSED OR IMPLIED, INCLUDING ANY IMPLIED WARRANTY OF MERCHANTABILITY OR FITNESS FOR ANY PARTICULAR PURPOSE, AND ANY RIGHTS OR REMEDIES AGAINST ANY PERSON OR ENTITY UNDER THE UNIFORM COMMERCIAL CODE OR OTHERWISE WITH RESPECT TO THE SALE OF THE PRODUCT. THE REMEDIES AND OBLIGATIONS STATED IN THIS WARRANTY ARE THE SOLE AND EXCLUSIVE REMEDIES OF AND OBLIGATIONS TO THE OWNER FOR ANY AND ALL MATTERS ARISING WITH RESPECT TO OR IN ANY WAY CONNECTED WITH THE PRODUCT, REGARDLESS OF THE SOURCE OR PROVIDER OF SUCH GOODS. IN NO EVENT, WHETHER AS A RESULT OF BREACH OF CONTRACT, WARRANTY TORT (INCLUDING NEGLIGENCE) OR OTHERWISE, SHALL WAYNE WATER SYSTEMS OR ANY AFFILIATE BE LIABLE FOR ANY SPECIAL, INCIDENTAL OR CONSEQUENTIAL DAMAGES.

You **MUST** retain your purchase receipt along with this form. In the event you need to exercise a warranty claim, you **MUST** send a **copy** of the purchase receipt along with the material or correspondence. Please call Wayne Water Systems (800-237-0987) for return authorization and instructions.

DO NOT MAIL THIS FORM TO Wayne Water Systems. Use this form only to maintain your records.

MODEL NO. _____ SERIAL NO. _____ INSTALLATION DATE _____

ATTACH YOUR RECEIPT HERE

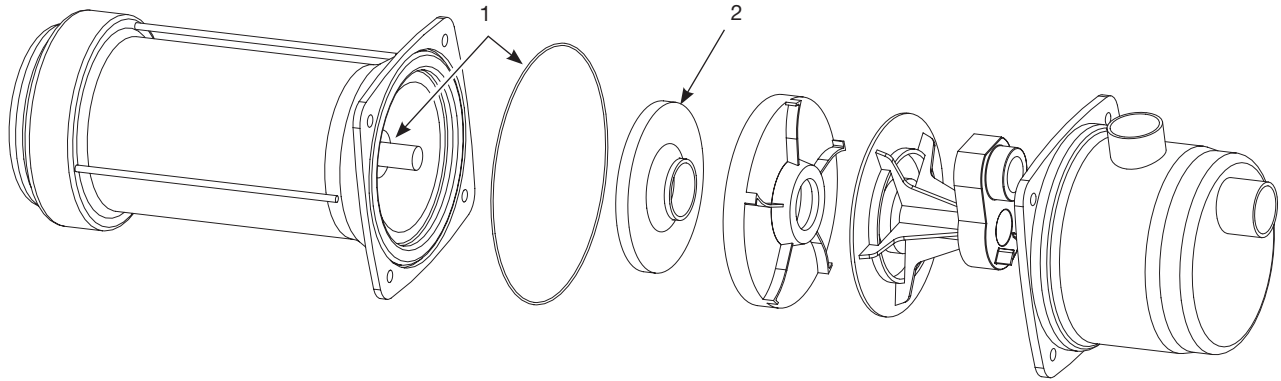
For Replacement Parts or Customer Support, Call 1-800-237-0987

Please provide following information:

- Model number
- Serial number (if any)
- Part description and number as shown in parts list

Address parts correspondence to:

Wayne Water Systems
101 Production Drive
Harrison, OH 45030 U.S.A.



REPLACEMENT PARTS LIST

Ref. No.	Description	Part Number	Qty.
1	Shaft Seal and Gasket	64048-WYN1	1
2	Impeller	64049-WYN1	1

